

**NEW:** Find **great deals** on the latest gadgets and more in the **ScienceDaily Store!**

## Science News

from research organizations



### Esophageal cancer: Loss of muscle mass represents a significant risk to survival

**Date:** February 14, 2017

**Source:** Medical University of Vienna

**Summary:** Esophageal cancer patients who suffer loss of muscle mass (sarcopenia) during neoadjuvant therapy (chemotherapy prior to surgery) survive, on average, 32 months less than patients with no sarcopenia, new research concludes.

**Share:**

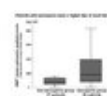
#### FULL STORY

Esophageal cancer patients who suffer loss of muscle mass (sarcopenia) during neoadjuvant therapy (chemotherapy prior to surgery) survive, on average, 32 months less than patients with no sarcopenia. This is the central finding of a recent study conducted at the Comprehensive Cancer Center (CCC) of MedUni Vienna and Vienna General Hospital. The study has recently been published in the *Euro-pean Journal of Cancer Surgery*.

Esophageal cancer is the eighth commonest type of cancer and sixth commonest cause of death from cancer in Austria. According to "Statistik Austria," approximately 420 people develop this type of cancer every year. This means that esophageal cancer is a rare form of cancer but the number of cases has grown rapidly over the past few years. The number of cases in men has risen sixfold and has quadrupled in women, men being more likely to develop this type of cancer than women.

Apart from smoking and high alcohol consumption, risk factors for esophageal cancer also include gastro-esophageal reflux disease and the resulting cell changes in the lower part of the oesophagus (Barrett metaplasia). The standard treatment for patients in which the tumour is advanced but not yet metastasised, is to give chemotherapy or a combination of

#### Related Stories



Simple Screening Test Can Predict Heart Failure Severity

May 18, 2016 — It is now recognized that sarcopenia, defined as the loss of muscle mass and strength, is related to heart failure. Recent research has shown that heart failure severity could be diagnosed by using a ...

**read more »**

Autophagy Defect Causes Loss of Muscle in Aging

June 8, 2015 — Researchers have detected marked upregulation of p62/SQSTM1, but not LC3, protein levels in the cytosol of sarcopenic muscle fibers in mice. This unbalanced expression appears to induce an autophagic ...

**read more »**

Muscle Loss Ups Mortality, Sepsis Risk in Liver Transplant Candidates

Feb. 13, 2014 — Researchers have determined that sarcopenia -- a loss of skeletal muscle mass—increases risk of sepsis and mortality risk in patients undergoing live donor liver transplantation. Findings suggest ...

**read more »**

Regular Exercise in Middle Age Protects Against Muscle Weakness Later in Life

Dec. 14, 2013 — A cross-sectional study has found that exercising in middle age is a protective factor

chemotherapy and radiotherapy prior to surgery (multimodal therapy). In local carcinomas that are not advanced, surgery is the treatment of choice.

### Nutrition and exercise affect chances of survival

In their study, experts in stomach and esophageal cancer from the Comprehensive Cancer Center of MedUni Vienna and Vienna General Hospital (CCC GET-Unit, Head: Sebastian Schoppmann) investigated to what extent sarcopenia and body composition changed during multimodal therapy and whether this has any influence upon long-term survival. The results show that patients who suffered sarcopenia (loss of muscle mass below a defined threshold) at any time during treatment had a poorer prognosis for survival: on average, their period of survival was 32 months shorter than that of patients who were not diagnosed with sarcopenia. Sarcopenia was therefore identified as an independent risk factor.

Says Matthias Paireder, Department of Surgery (Head: Michael Grant) of MedUni Vienna and Vienna General Hospital, member of the CCC-GET and lead author of the study: "Sarcopenia is not necessarily a side effect of chemotherapy. Many patients were already sarcopenic before the treatment and there was no significant progression of sarcopenia during treatment. The reasons for this loss of general muscle mass are poor nutrition and lack of exercise."

### New study planned

In a new study, the team headed up by Paireder and Schoppmann will investigate whether a programme that includes nutritional advice and physical training could significantly increase long-term survival for esophageal cancer patients.

### Story Source:

Materials provided by **Medical University of Vienna**. *Note: Content may be edited for style and length.*

### Journal Reference:

1. M. Paireder, R. Asari, I. Kristo, E. Rieder, D. Tamandl, A. Ba-Ssalamah, S.F. Schoppmann. **Impact of sarcopenia on outcome in patients with esophageal resection following neoadjuvant chemotherapy for esophageal cancer.** *European Journal of Surgical Oncology (EJSO)*, 2017; 43 (2): 478 DOI: 10.1016/j.ejso.2016.11.015

### Cite This Page:

 MLA

 APA

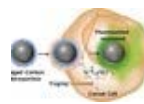
 Chicago

Medical University of Vienna. "Esophageal cancer: Loss of muscle mass represents a significant risk to survival." *ScienceDaily*. ScienceDaily, 14 February 2017. <[www.sciencedaily.com/releases/2017/02/170214095612.htm](http://www.sciencedaily.com/releases/2017/02/170214095612.htm)>.

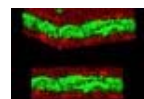
against sarcopenia and effective in maintaining muscle strength and physical performance. Sarcopenia is a ... [read more »](#)

## Strange & Offbeat

### HEALTH & MEDICINE

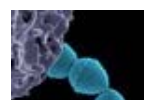


Luminescence Switchable Carbon Nanodots Follow Intracellular Trafficking and Drug Delivery



Matters of the Heart: Researchers Create 3-D Beating Heart

Wired for Sound: Enraging Noises Caused by Brain Connection Overdrive



Cytotoxins Contribute to Virulence of Deadly Epidemic Bacterial Infections

### MIND & BRAIN



Technology Puts 'Touch' Into Long-Distance Relationships

A Theoretical Physicist Reassures the Lovelorn

Chip Could Make Voice Control Ubiquitous in Electronics

New Research Demonstrates a Link Between Swearing Fluency and Emotion

### LIVING & WELL



Just Press Print: How 3-D Printing at Home Saves Big Bucks

Positive Social Support from a Spouse Could Have Negative Consequences, New Research Shows



Why the Lights Don't Dim When We Blink



Raw Materials for Meatballs, Falafel from Mealworms and Crickets